

Carolina's Purse Tutorial



Created by Carolina Buchting

Materials Needed

Card Stock

- From one solid color of card stock you'll need:
 - 5" x 8" piece of card stock
 - 1/2" x 6 1/2" strip
 - 4" x 4" square piece

Designer Paper

- From one style of designer paper you'll need:
 - 1 1/2" x 8" strip
 - 1/4" x 6 1/4" strip
 - 1" x 1" square piece
- From a coordinating designer paper you'll need:
 - 3" x 3" square piece of designer paper

Stamps

Inks

White Gel Pen

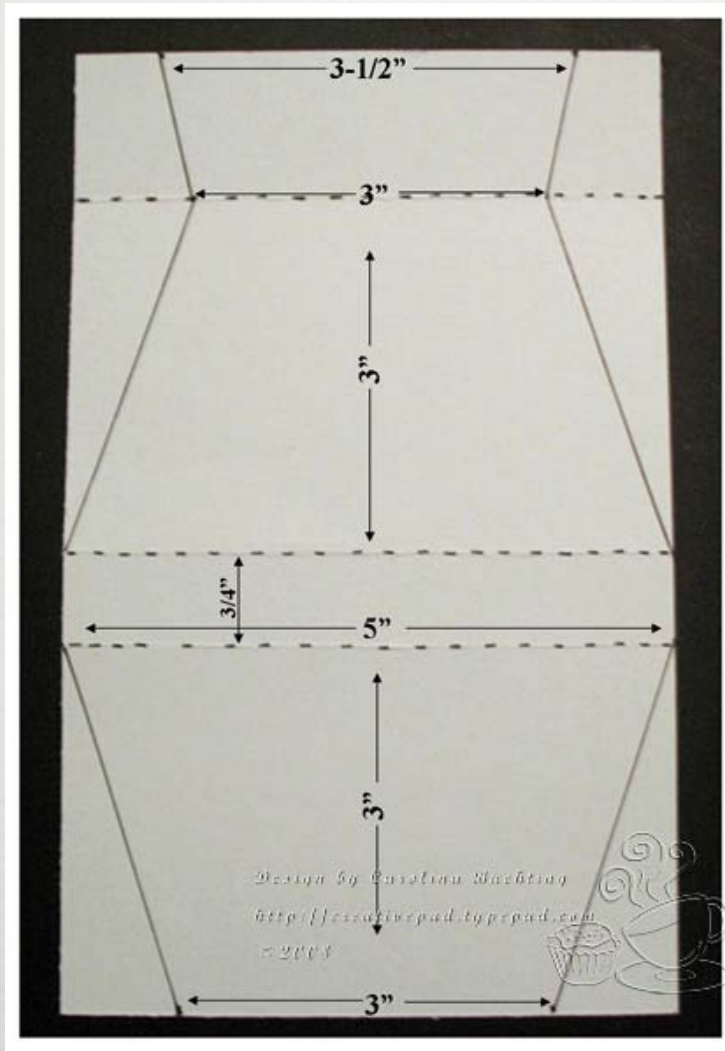
Ribbon

2 Brads

Tools & Adhesive:

- Paper Trimmer with Cutting and Scoring Blade
- Cutting Mat
- Hobby Blade
- Ruler
- Bone Folder
- 1/8" Handheld Punch
- Dimensionals

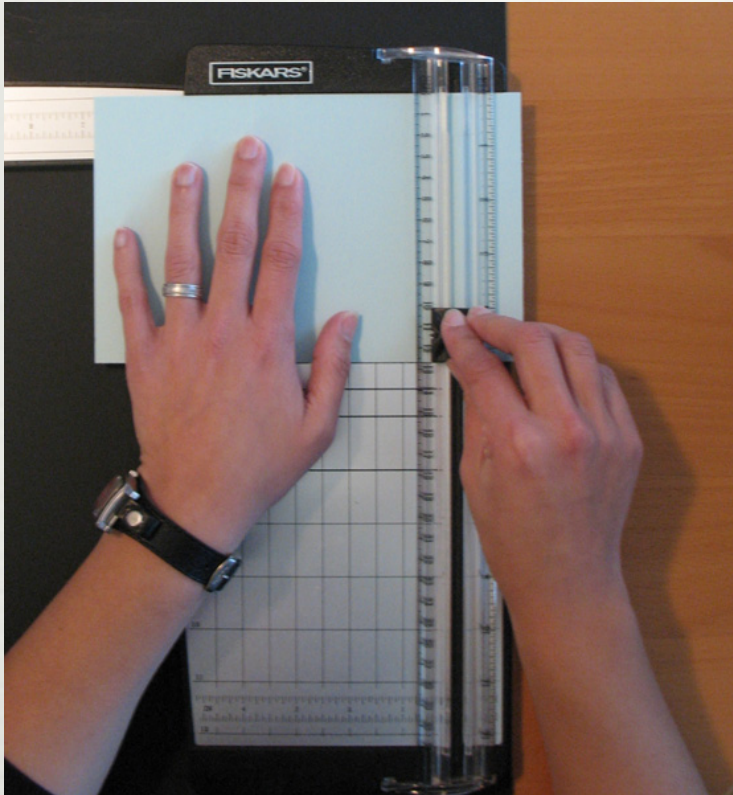
Template with Measurements



This a template of the purse. I've added measures as well as score and cut lines. The score lines are represented by dashed lines and the cut line are represented by solid lines.

I will take you step-by-step in this tutorial, but thought for those of you who need a visual of it, this might be useful.

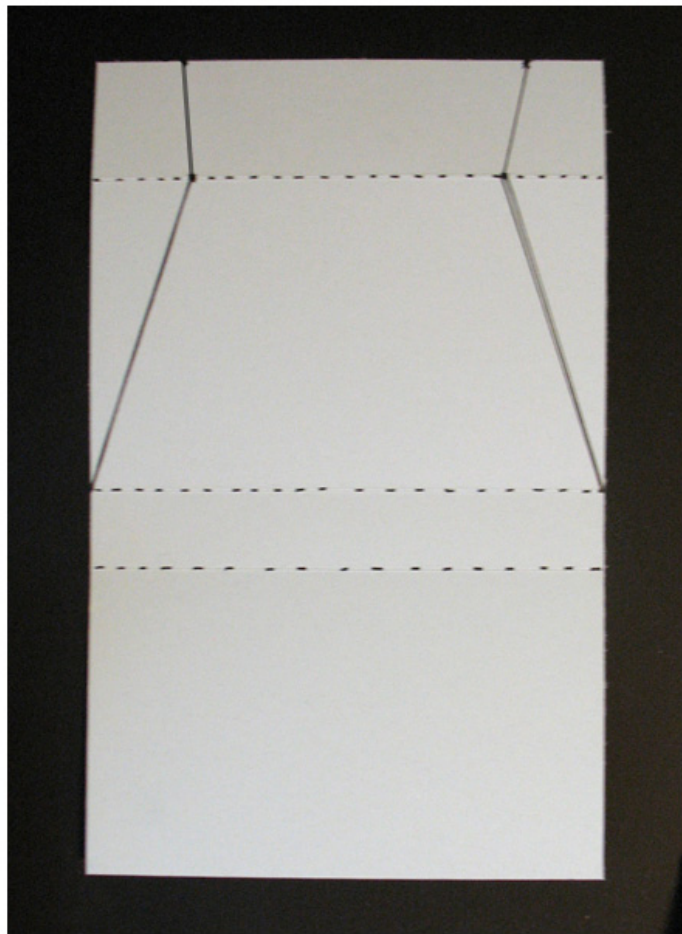
Step 1 - Scoring



Step 1

- Position card stock lengthwise and using the scoring blade on paper trimmer, score card stock at 3", 3³/₄", and 6³/₄".

Step 2 – Measure & Cut Flap and Back of Purse



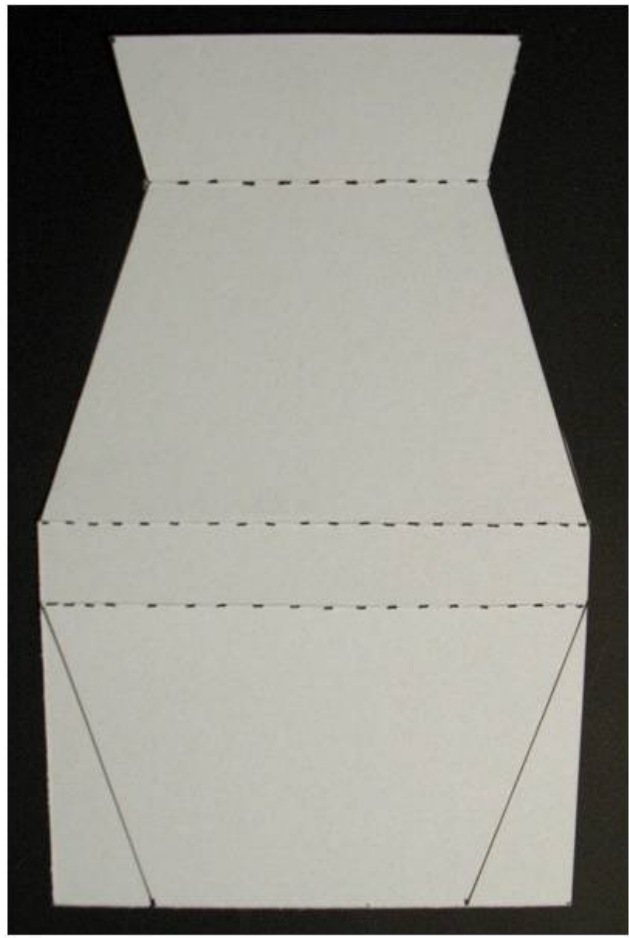
You have the option of either using a pencil and ruler or a bone folder and ruler to mark your measurements. For the tutorial I used a pen so you can see the markings better, but it's up to you what you feel more comfortable with.

Step 2a - Measuring

- On the outside edge of flap, measure in $\frac{3}{4}$ " in on both sides and mark.
- On the scored section of the flap measure in 1" in on both sides and mark.
- Connect the measurements as shown
- Step 2b – Cut
 - Cut along those lines. I suggest using a ruler, hobby blade and cutting mat for best results.

Step 3 – Measure & Cut

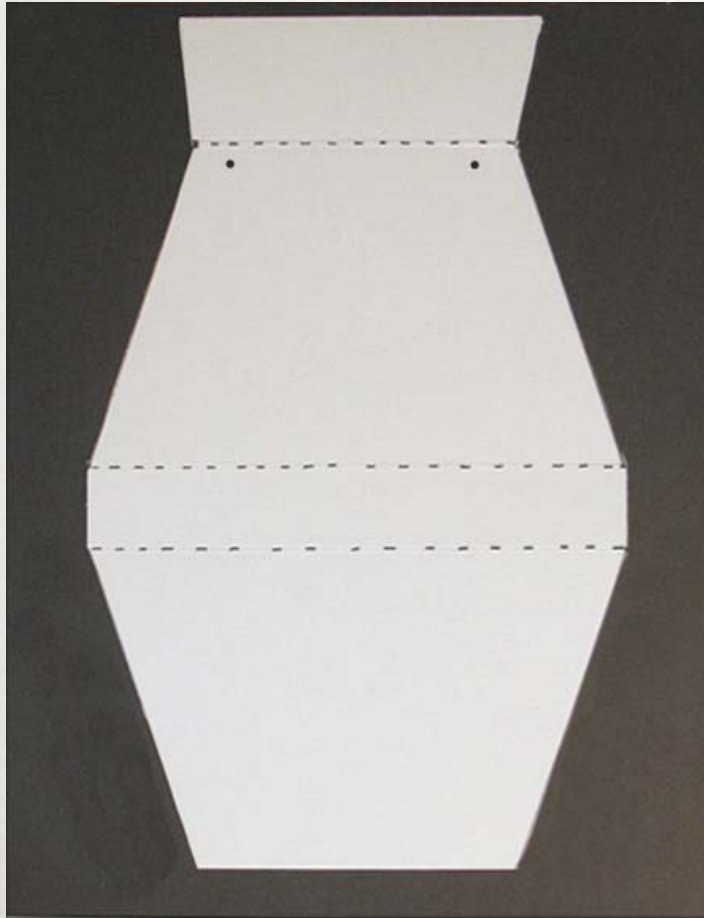
Front of Purse



Step 3a - Measuring

- On the outside edge of the front of the purse, measure in 1" in on both sides and mark.
 - Connect the measurement to the outside edge of the middle scored line of the purse.
- Step 3b – Cut
- Cut on the solid lines as shown.

Adding the Handle



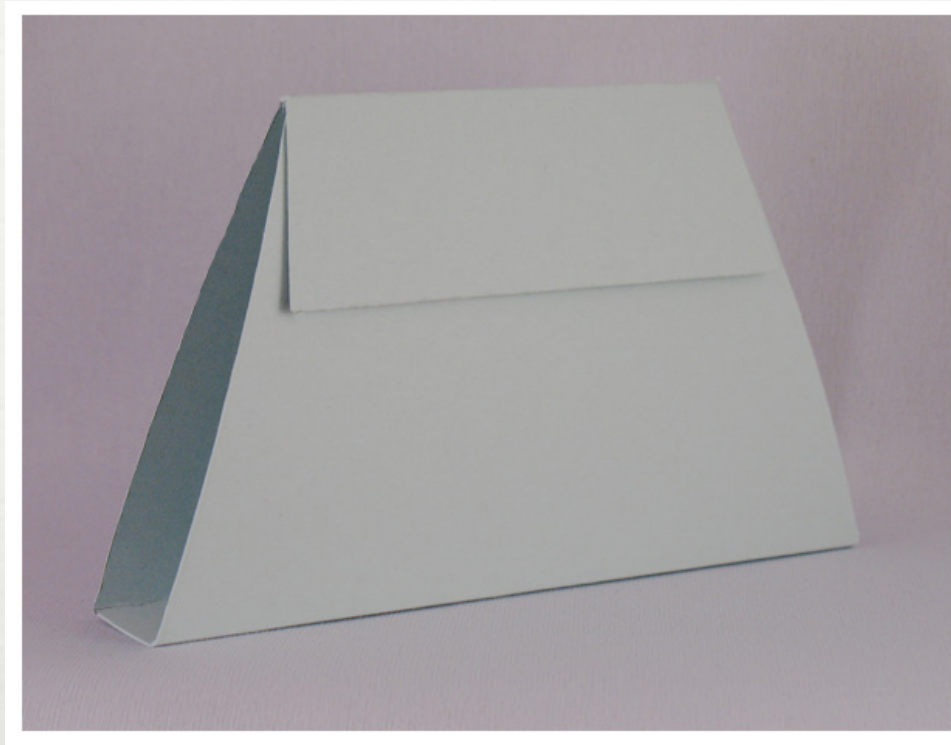
You're done cutting ! You should end up with this form. I suggest you use your bone folder to crease all the scored lines.

To add the holes for the handle, punch two holes under the flap scored line and about $\frac{1}{4}$ " or so in on either side.

You'll put through the brads from the inside – please see the last page of this tutorial for the rest of the steps on attaching the handle.

You're Done – Time to Decorate!

You should end up with this form once it's all folded up.



Decorating Your Purse and Attaching Handle



Back of Purse -
Handle



To decorate my purse, I did the following

- I faux stitched all around the edges of the purse and handle with White Gel Pen.
- I added the 1½” x 8” strip of designer paper down the middle of the purse – I suggest you first do this without glue to get the creases crisp and then added glue to the designer paper to glue it down.
- For the flower I stamped it on Real Red designer paper with Real Red ink and cut it out. Matted it on top of Basic Black and cut around the image so I would have just a slight of a black border. I added a ½” Basic Black faux stitched circle, a ¼” Designer paper circle, and a half back pearl to the middle of the flower. I attached the flower with dimensionals, making sure I left enough room in the middle of the dimensionals to feed the ribbon through.
- For the handle I adhered the ¼” x 6¼” of designer paper to the ½” x 6½” strip of card stock and punched a hole about ½” up on either end. This way when you put the brads through the purse and handle you have about a ½” piece you can glue down over the legs of the brads for a cleaner finish.